

WHITE HYBRID MAIZE

CAP 96-19

EARLY

MEDIUM

LATE

High yielding, dual purposes white hybrid

CAP 96-19 is a high yielding white hybrid. This hybrid has a long pollination period increasing its ability to evade the effects of moisture stress during flowering. The plant structure and cobs are generally large

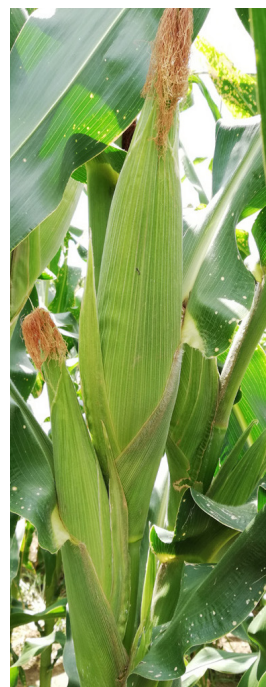
It is noted as being a medium maturing variety with semi-flint, large kernels. It is tall and leafy in plant structure with large cobs. Suitable as a green mealie.

It is resistant to most foliar diseases and yields approximately 10mt.



GRAIN | SILAGE

- Medium maturity: 120-130 days
- Semi-flint, large kernels
- Tall and leafy plant structure Resistant to most foliar diseases



Variety	Anthesis	Mid Altitude		N-Stree	Ear Position	Lodging		Husk Cover	Ear Rot	GLS	Common Rust	Northern Leaf Blight	Grain Texture	MSV	PLS
	dae	t/ha	t/ha			0-1	wortel %								
CAP 96-19	65-85	6.5	7.1	3.9	0.5	12.2	9.1	8.2	1.4	1.5	2.0	2.0	3.0	2.0	1.5

Mid altitude dry – Average maximum temperature of between 24-33 degrees and season precipitation of less than 700mm

Mid altitude humid – Average maximum temperature between 25-28 degrees and season precipitation of more than 700mm

N stress – trials conducted under conditions with nitrogen stress

Husk cover – Percentage of plants with ears that are not completely covered by the husks

Ear rot – Percentage of cobs that are rotten

GLS- Score for the severity of gray leaf spot from 1 (clean, no infection) to 5 (severely diseased)

MSV- Score for the severity of maize streak virus from 1 (clean, no infection) to 5 (severely diseased)

Grain Texture- Rated on a scale from 1(flint) to 5 (Dent)

PLS- Score for the severity of Phaeosphaeria leaf spot symptoms rated on a scale from 1 (= clean, no infection) to 5 (= severely diseased).

Recommended for regions:

PLANT EARLY

- 1 - Western Regions
- 2 - Temperate Eastern Regions

- 3 - Cold Eastern Region

RECOMENDED FOR SILAGE KZN

- 4 - KwaZulu Natal Region

*ELSEWHERE AS A GREEN MEALIE AND GRAIN UNDER HIGH STRESSED AREAS.

Our farmers are serious about farming.
We're serious about seed.