

HYBRID FORAGE SORGHUM

BIG CHIEF BMR

(PHOTO PERIOD SENSITIVE FORAGE SORGHUM X SUDAN GRASS)

OVERVIEW

BIG CHIEF can expand the window for useage because it will not head under most conditions. BIG CHIEF continues to grow and maintain its nutrient value in the leaves and stem until it is chopped or grazed thus extending the time period for grazing or chopping.

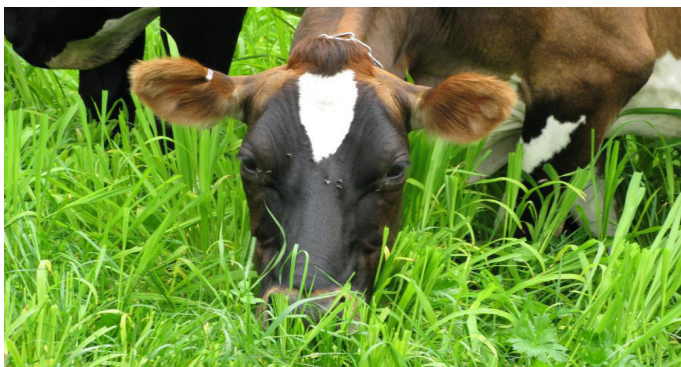
BIG CHIEF is versatile hybrid sorghum X sudangrass that can meet most summer forage needs. It is well suited for use as emergency feed. This Hybrid is best used for hay, haylage and greenchop.

Other uses include grazing and ground cover. BIG CHIEF has a good leaf to stem ratio that helps provide good quality with proper management.

BMR = BROWN MIDRIB

Brown Midrib mutations in sorghum generally lower lignin content, resulting in increased fibre digestion with increased dry matter intake, higher energy intake, and increase animal performance. This provides increased daily gains in milk and beef production.

A farmer in Humansdorp, Eastern Cape area confirmed that he gets 2l of milk extra per cow, per day when his cows feed on the BIG CHIEF pastures. Palatability is much higher because of the BMR gene.



- Photo Period Sensitive
- Headless under certain conditions
- Dual Purpose - Silage or Hay
- Extended Harvest Window
- Best as Hay, Haylage & Greenchop, but can be grazed aswell
- Very good Leaf to Stem Ratio
- Provides Good Forage Quality
- Tolerant to Anthracnose and Greenbug Biotype C
- Planting Date: October through to early January depending on region

